

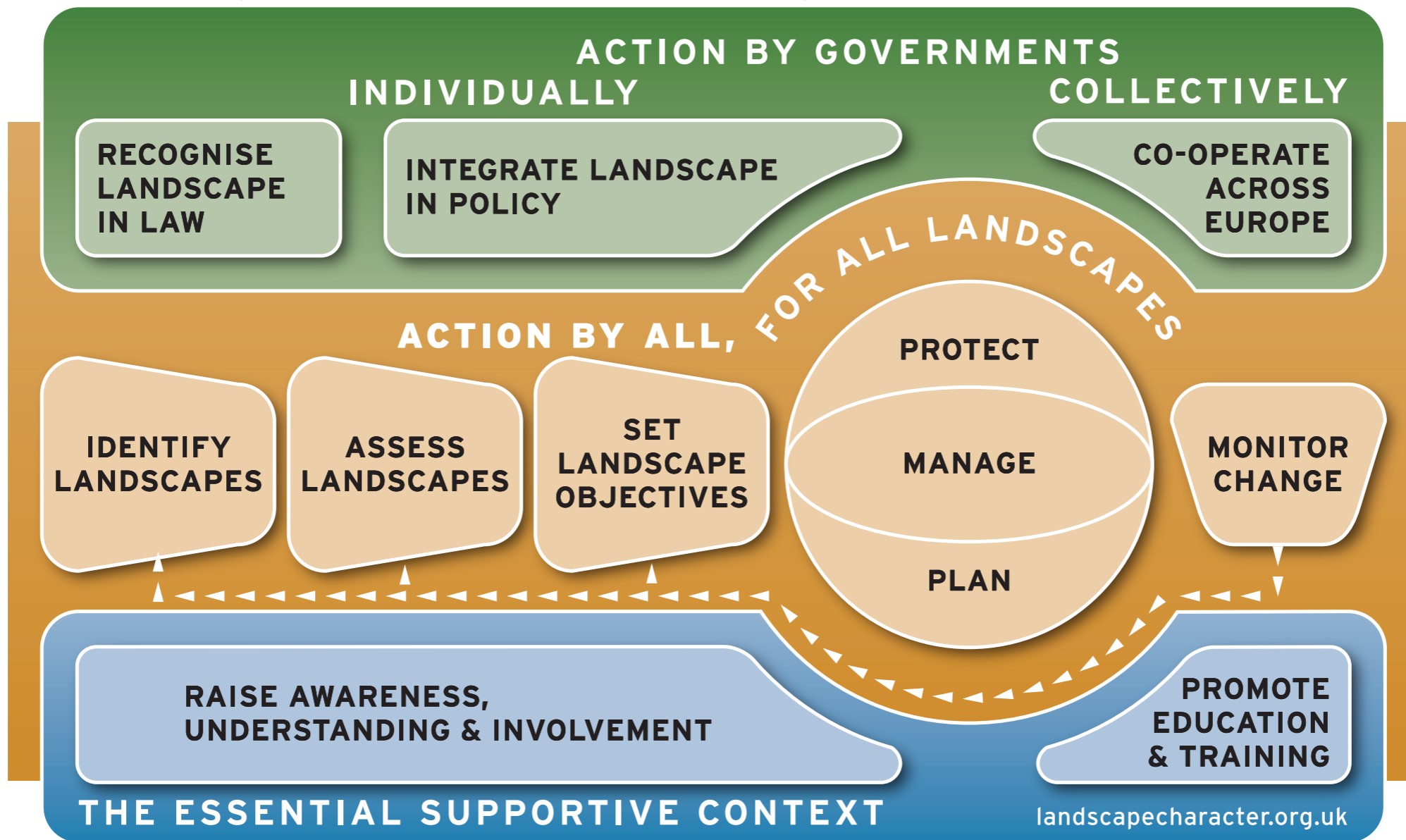
CORDIALE

what will the CORDIALE INTERREG IVa bid do for
south west protected landscapes?

CORDIALE will:

- Help protected landscapes implement the ambitions of the European Landscape Convention down to the community level
- Boost data collection on landscape assets
- Deepen our programme of shared learning
- Field test innovative approaches to adapted and resilient land management

making a reality of the
European Landscape Convention



Boost Data collection:

- Audit best practice in capturing the value of our protected landscapes,
- support new approaches to mapping landscape assets and features, esp engaging communities in agreeing landscape quality objectives,
- Produce an interactive online atlas of mapped data available down to the commune/parish,
- Produce a common standard for monitoring landscape change.

Programme of learning:

- Develop and deliver training packages to improve the identification, assessment and monitoring of landscape assets,
- Support cross border exchanges to engage practitioners and stakeholders in understanding landscape change,
- Produce toolkits for practitioners and communities to encourage and support engagement in landscape management.

Field Testing:

- Linked cross border field trials working with practitioners to experiment with adapted and resilient approaches to land management,
- Linked cross border field trials working with communities to address landscape change and protect, plan and manage landscape assets for the future.